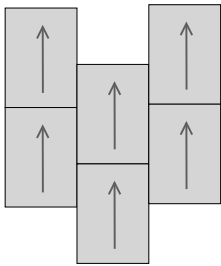
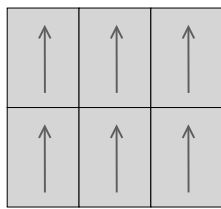


Division 9 Carpet Tile

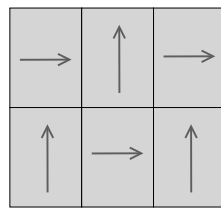
- Provide 5% of total installed square footage or minimum 1 box of attic stock for carpet tile. For custom carpet tile or complex patterns coordinate with MSU facilities to determine if increased quantity of attic stock is needed.
- Ensure carpet tile selected is recommended to be laid in Ashlar or Monolithic pattern.
- In renovated areas, provide testing prior to installation, to ensure moisture and alkalinity are compatible with selected product and adhesive.
- Carpet tiles shall be adhered (Not floating with stickers at corners).
- Any deviations from Missouri State University's Design Guidelines should be approved with the project manager.



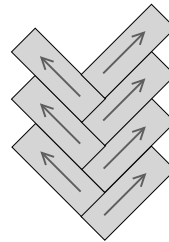
**Ashlar**  
typical



**Monolithic**  
typical



**Quarter Turn**  
not allowed



**Herringbone**  
with owner approval