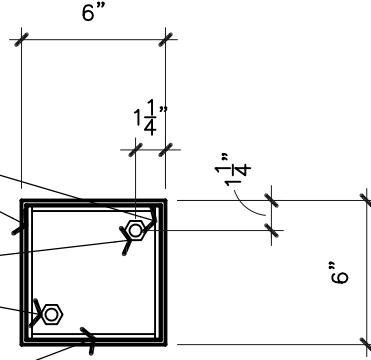


NOTE:  
HOLD VERTICAL PLATES IN FROM EDGE  
OF BASE PLATE  $\frac{1}{4}$ " TO ALLOW FOR  
STEEL PEDESTAL TO SLIDE DOWN OVER  
BASE.

$5\frac{1}{2}$ " X 12" X  $\frac{3}{16}$ " THICK VERTICAL STEEL  
PLATES. WELD TO BASE PLATE.

6" X 6" X  $\frac{1}{2}$ " THICK STEEL BASE  
PLATE WITH (2)  $\frac{1}{2}$ " DIAMETER ANCHOR  
BOLTS WITH LEVELING NUTS SET ON  
MORTAR BED.

$5\frac{1}{8}$ " X 3" X  $\frac{3}{16}$ " STEEL PLATE  
(ONE EACH SIDE).



# PEDESTAL FOOTING PLAN TYPE 1

SCALE: 1 1/2"=1'-0"

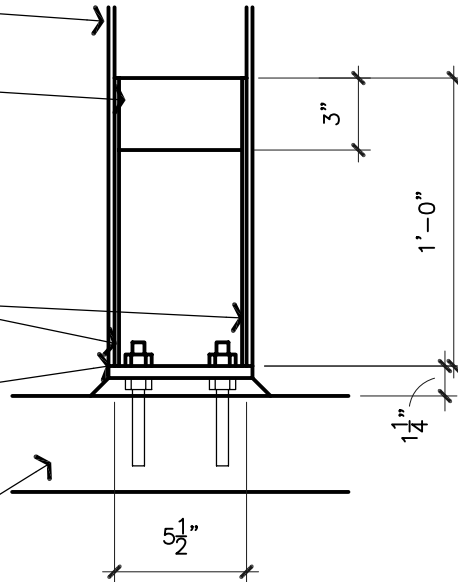
STEEL PEDESTAL.

$5\frac{1}{8}$ " X 3" X  $\frac{3}{16}$ " STEEL PLATE  
(ONE ON EACH SIDE).

$5\frac{1}{2}$ " X 12" X  $\frac{3}{16}$ " VERTICAL STEEL  
PLATES. WELD TO BASE PLATE.

6" X 6" X  $\frac{1}{2}$ " THICK STEEL BASE  
PLATE WITH (2)  $\frac{1}{2}$ " DIAMETER ANCHOR  
BOLTS WITH LEVELING NUTS SET ON  
MORTAR BED.

EXISTING CONCRETE WALK.

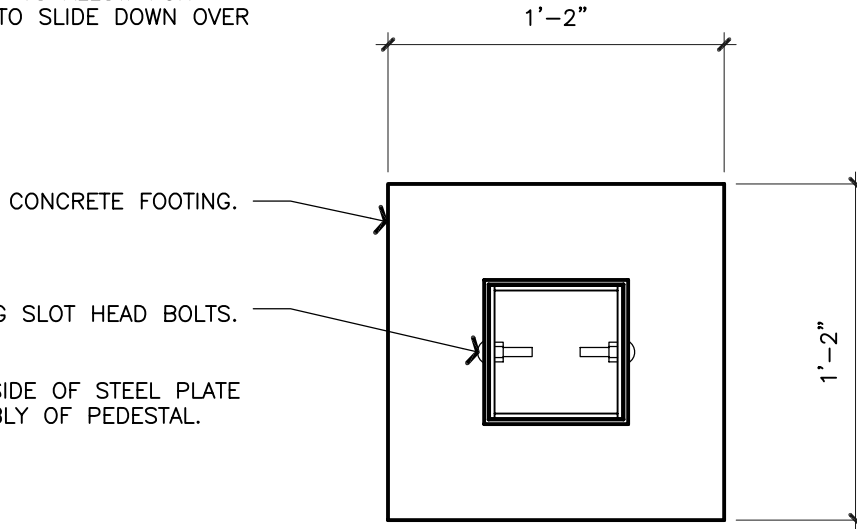


NOTE:  
MANUFACTURER TO PROVIDE  
CONTINUOUS WELDS AT ALL JOINTS.  
GRIND ALL WELDS SMOOTH.

# PEDESTAL FOOTING SECTION TYPE 1

SCALE: 1 1/2"=1'-0"

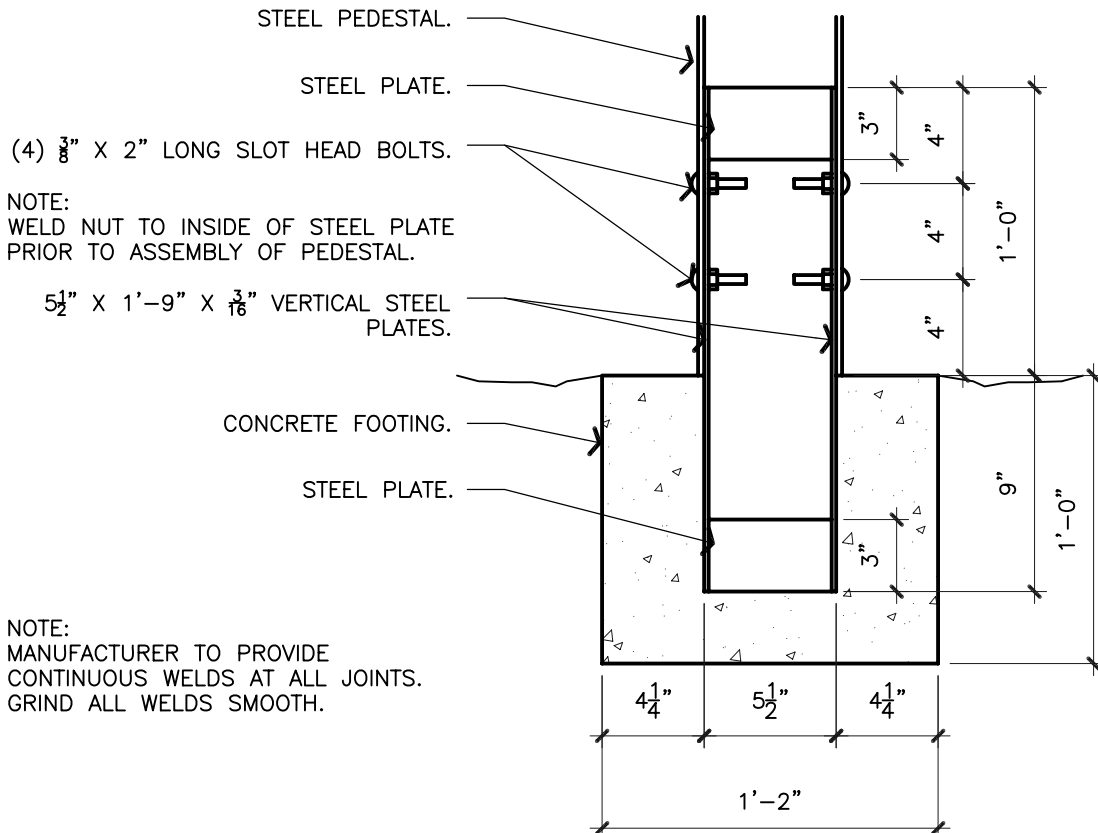
NOTE:  
 HOLD VERTICAL PLATES IN FROM EDGE  
 OF BASE PLATE  $\frac{1}{4}$ " TO ALLOW FOR  
 STEEL PEDESTAL TO SLIDE DOWN OVER  
 BASE.



NOTE:  
 WELD NUT TO INSIDE OF STEEL PLATE  
 PRIOR TO ASSEMBLY OF PEDESTAL.

## PEDESTAL FOOTING PLAN TYPE 2

SCALE: 1 1/2"=1'-0"



NOTE:  
 MANUFACTURER TO PROVIDE  
 CONTINUOUS WELDS AT ALL JOINTS.  
 GRIND ALL WELDS SMOOTH.

## PEDESTAL FOOTING SECTION TYPE 2

SCALE: 1 1/2"=1'-0"