

SECTION 10 14 25 – EXTERIOR SIGNAGE

TYPICAL BUILDING NAME:

8" TALL FONT
THE FONT STYLE IS: ROFFE 515
MANUFACTURER: ARK RAMOS
FINISH: DARK BRONZE ANODIZED

TYPICAL BUILDING ADDRESS:

6" TALL FONT
THE FONT STYLE IS: ROFFE 515
MANUFACTURER: ARK RAMOS
FINISH: DARK BRONZE ANODIZED

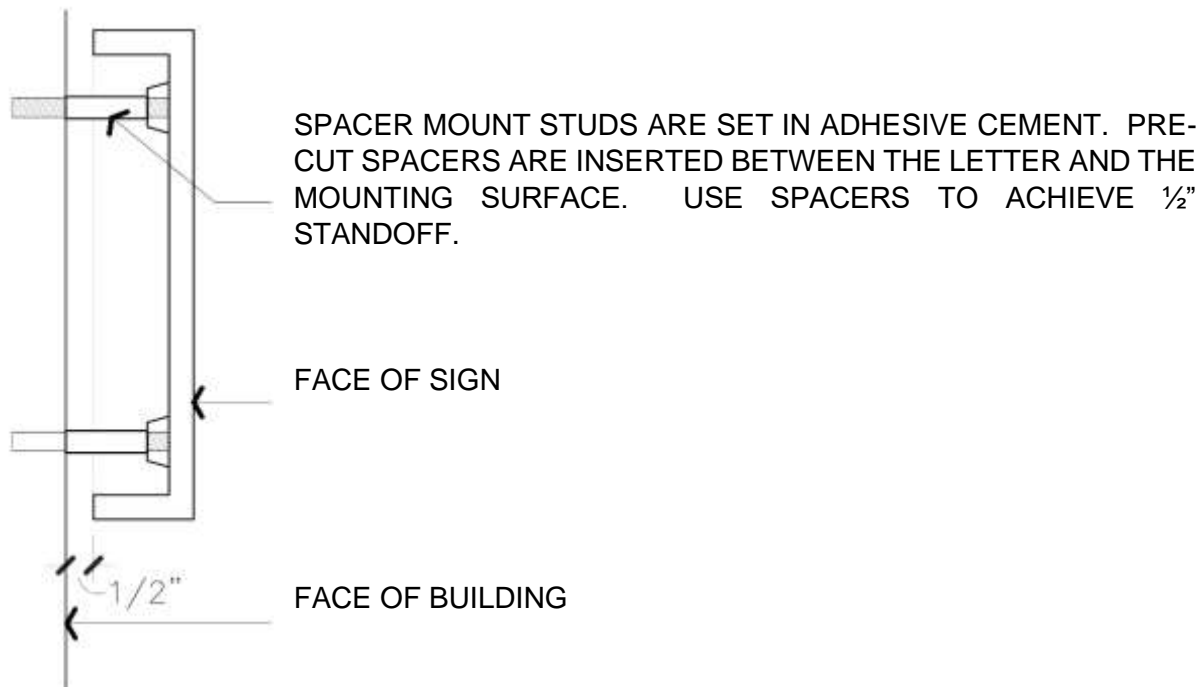
NOTES:

SUBMIT MOUNTING TEMPLATE TO PROJECT MANAGER FOR APPROVAL BEFORE INSTALLATION. LETTERING SHALL BE KERNED.
USE THE LETTER "O" INSTEAD OF THE NUMBER ZERO.

FONT SAMPLE:

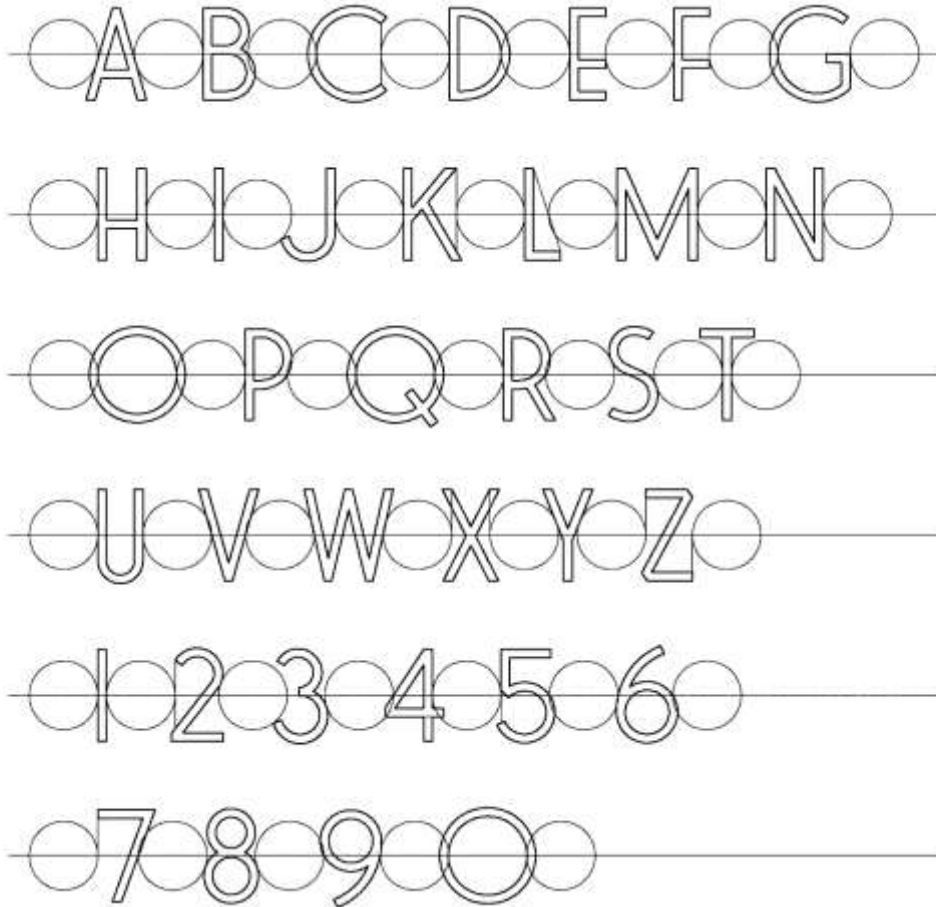
ABCDEFGHIJKLMNOPQRSTUVWXYZ&1234567890

INSTALLATION:



ROFFE SIGNAGE SPACING (KERNING):

KERNING IS NECESSARY TO ADJUST THE SPACING OF TWO PARTICULAR CHARACTERS TO CORRECT VISUALLY UNEVEN SPACING. IN THE EXAMPLE BELOW THE SPACING (KERNING) IS SHOWN SYMBOLICALLY WITH A SPACING CIRCLE.



NOTES:

1. 8" TALL FONT – 6" DIAMETER SPACING CIRCLE
2. 6" TALL FONT – 4½" DIAMETER SPACING CIRCLE
3. SPACE BETWEEN WORDS TO BE 3 SPACING CIRCLES.
4. USE THE LETTER "O" INSTEAD OF THE NUMBER ZERO.

SUBMIT MOUNTING TEMPLATE TO PROJECT MANAGER FOR APPROVAL BEFORE INSTALLATION. LETTERING SHALL BE KERNED. CAD FILE AVAILABLE UPON REQUEST.

END OF SECTION 10 14 25